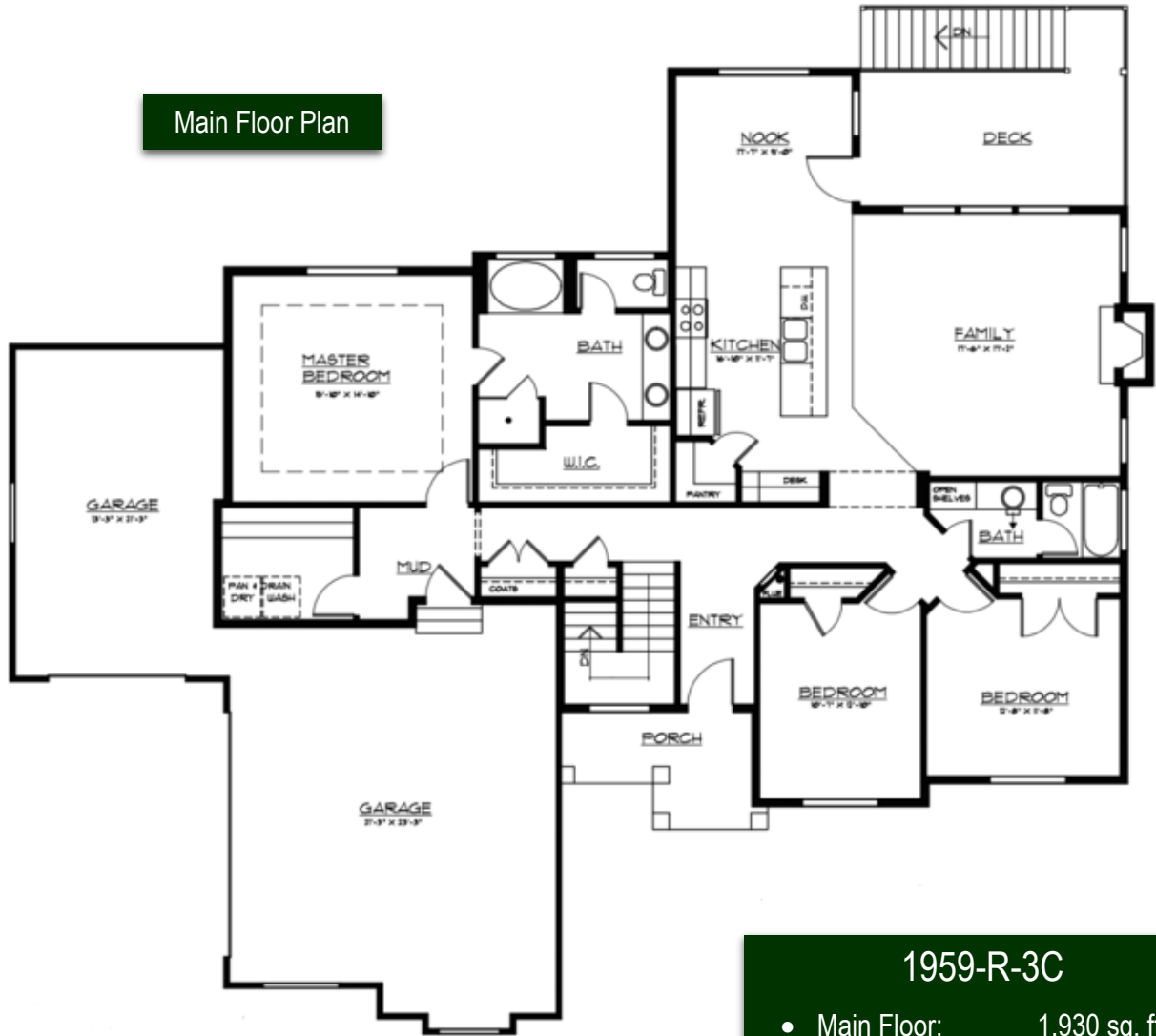




Main Floor Plan



For more plans & info visit:
harrishomes.co
 or call:
 Sales (801) 319-8115
 Construction (801) 636-5050

- 1959-R-3C**
- Main Floor: 1,930 sq. ft.
 - Basement: 2,007 sq. ft.
 - Total Finished 1,930 sq. ft.
 - Total Sq. Ft. 3,966 sq. ft.
 - Dimensions: 73' x 62"
 - 3 Bedrooms
 - 2 Bathrooms

Steve Harris Construction, Inc. reserves the right to make changes to these floor plans, specifications, dimensions, designs and elevations without prior notice. Stated dimensions and square footage are deemed reliable but may be modified. Renderings are representative but may not reflect actual finishes or construction design.