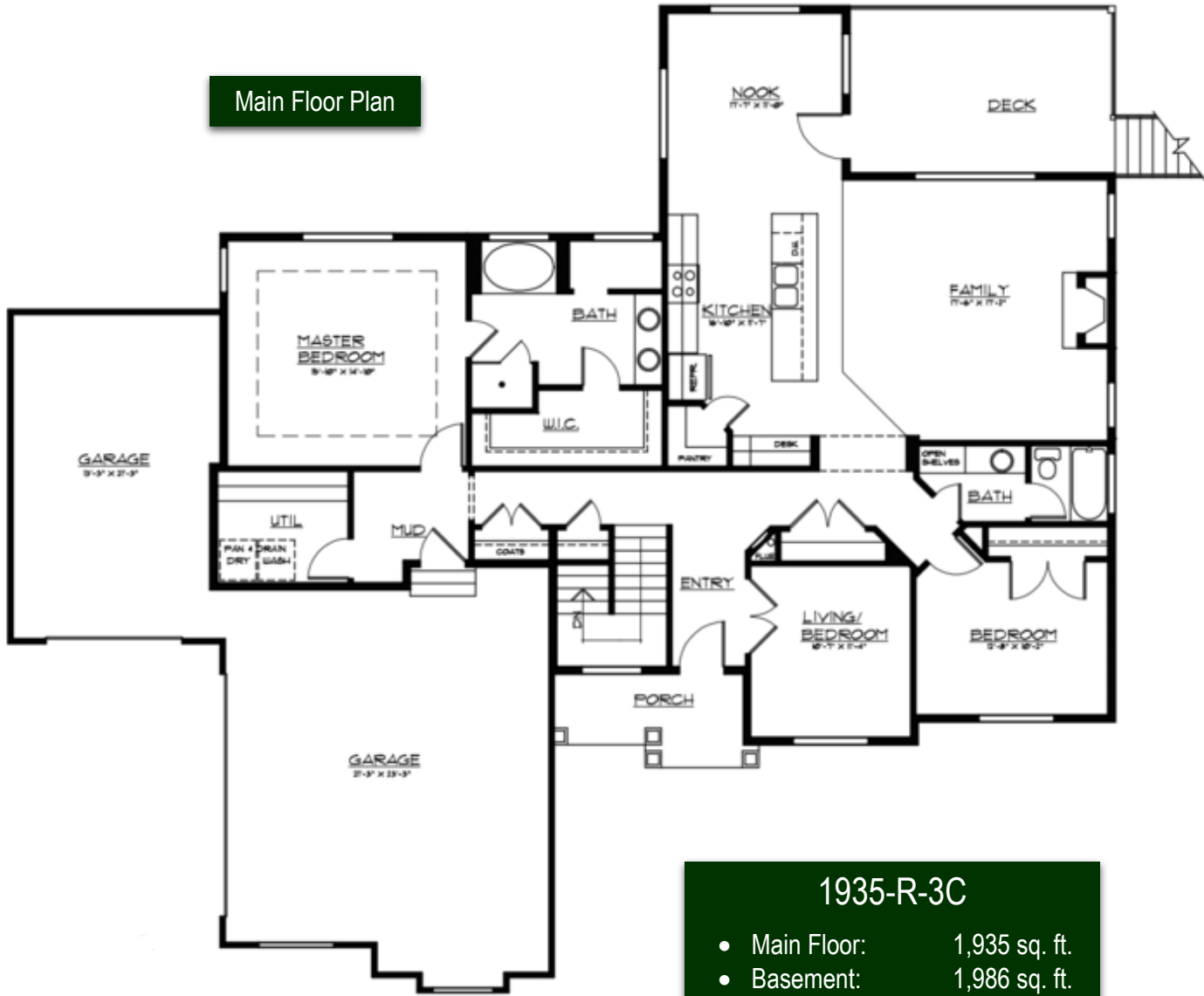




Main Floor Plan



1935-R-3C

- Main Floor: 1,935 sq. ft.
- Basement: 1,986 sq. ft.
- Total Finished: 1,935 sq. ft.
- Total Sq. Ft.: 3,921 sq. ft.
- Dimensions: 73' x 65'
- 3 Bedrooms
- 2 Bathrooms

For more plans & info visit:
harrishomes.co
 or call:
 Sales (801) 319-8115
 Construction (801) 636-5050

Steve Harris Construction, Inc. reserves the right to make changes to these floor plans, specifications, dimensions, designs and elevations without prior notice. Stated dimensions and square footage are deemed reliable but may be modified. Renderings are representative but may not reflect actual finishes or construction design.